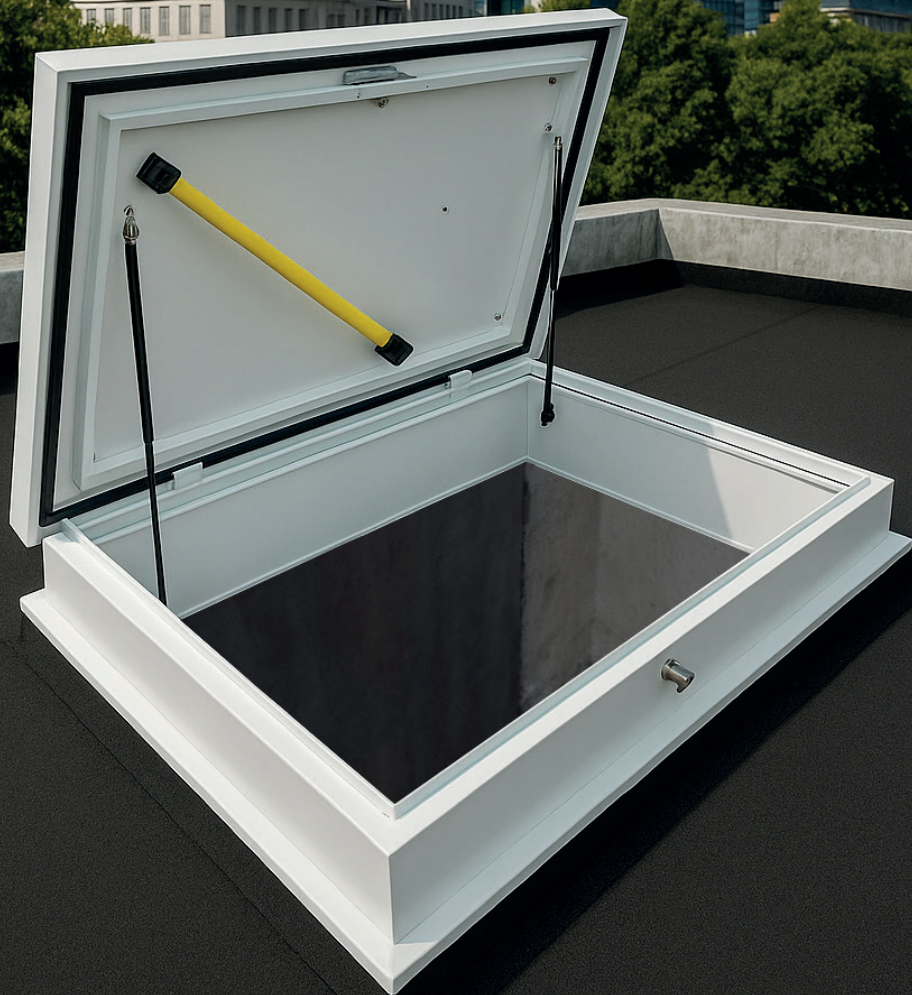


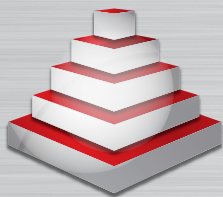


STAL - West Zrt.

THE SYSTEM SUPPLIER



ROOF HATCH CRH



STAL - West Zrt.

THE SYSTEM SUPPLIER

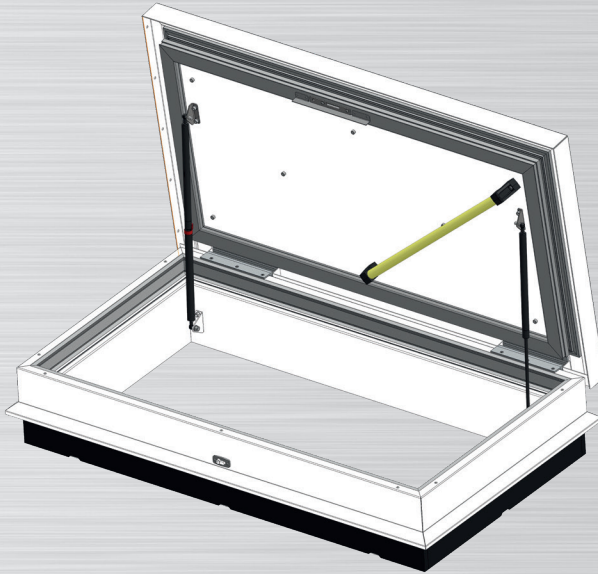
STAL-West Zrt. has been providing premium aluminium and steel structures, as well as custom engineering solutions, to the international industry for over 20 years. The Hungarian-owned company operates 80 km from Budapest, with a 4,000 m² production hall and a highly skilled team of 70 professionals. We ensure outstanding quality through our modern, partially robotized manufacturing facility.

Our core competencies include profile and sheet metal processing, high-quality welding, anodizing, powder coating, and the advanced VIANT coating technology. Our engineering department supports product development from prototype to mass production with advanced CAD/CAM systems, simulation capabilities, and reverse engineering.

Our **ISO 9001, ISO 14001, and ISO 3834-2 certifications** demonstrate our commitment to excellence and compliance with international standards.



Why choose the CRH roof hatch for roof access?



The CRH is a roof access hatch engineered to the highest technical standards, shaped by years of engineering expertise and real user needs – setting a new benchmark in **thermal insulation, safety, and installation efficiency.**

1. Patented thermal bridge-free structure
2. Custom-designed hinge mechanism
3. Easy installation, long-lasting performance
4. Fast opening, secure locking
5. Versatile application options

STAL-West CRH Insulated Roof Hatch – Safe Access to Flat Roofs

The insulated roof access hatch developed by **STAL-West Zrt.** is a high-performance unit with an aluminum and PVC structure, equipped with gas springs to support opening. It offers a durable, energy-efficient, and secure solution for gaining access to rooftop areas.

This roof hatch is the ideal choice for maintenance and inspection tasks, such as accessing rooftop mechanical systems, solar panels, or ventilation equipment. It is suitable for both insulated and non-insulated concrete, steel, and timber roofs, up to a maximum roof pitch of 15°.

CONSTRUCTION AND MATERIALS

- **Material:** powder-coated aluminium and plastic profile
- **Coating:** standard finish is powder-coated RAL 9010 (white); custom RAL colours are available upon request
- **Upstand height:** 280 mm
- **Frame and lid:** fully insulated and thermal bridge-free design
- **Insulation:** 80 mm rigid PIR/PUR foam insulation in both the frame and the lid

The CRH roof hatch is built with advanced window and door industry technologies, utilizing multi-chamber plastic profiles and a continuous perimeter gasket system to ensure excellent airtightness and an ultra-low thermal transmittance factor.

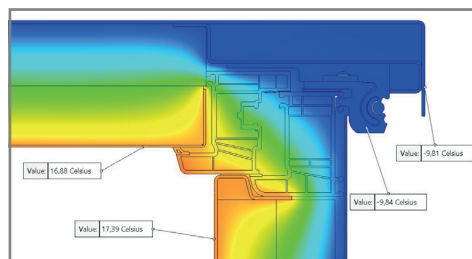


Figure 1. Composite hinge

THERMAL AND ACOUSTIC INSULATION

- **Thermal transmittance (U-value):** $U = 0.25 \text{ W/m}^2\text{-K}$ (according to EN-ISO 10077-2)
- **Thermal resistance (R-value):** $R = 3.71 \text{ m}^2\text{-K/W}$
- **Sound insulation:** 25 dB (based on preliminary measurements)
- The roof hatch design reduces condensation risk and enhances overall energy efficiency.

OPERATION AND SAFETY

- **Gas springs:** assist with easy opening and closing, lid locks automatically in the open position
- **One-hand operation:** low-effort, ergonomic handling
- **Safety handrail:** yellow, high-visibility grip for safe rooftop access
- **Locking mechanism:** stainless steel security cylinder lock operable from both inside and outside. The product can also be configured with custom locking systems, such as **panic locks** or **tailor-made security solutions** — because every project requires a different level of protection.
- **Load capacity:** up to 1000 kg/m^2 under continuous load



STAL - West Zrt.

THE SYSTEM SUPPLIER

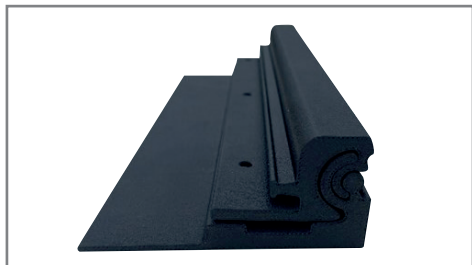


Figure 2. Hinge in closed position

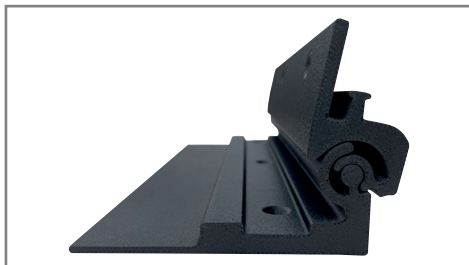


Figure 3. Hinge in open position

INSTALLATION AND MAINTENANCE

- **Compatibility:** suitable for insulated and non-insulated concrete, steel, and timber roofs
- **Max. roof pitch:** 15°
- **Lightweight:** low structural load, easy to handle
- **Quick installation:** the lid can be removed without tools by disengaging the gas springs, thanks to special hinge design

Our perfectly thermal bridge-free hinge system ensures outstanding insulation, and thanks to its innovative design, the lid can be detached from the frame at a 110° opening angle without any screws. This unparalleled freedom and user-friendliness make our product unique on the market. Experience the flexibility and premium quality offered by our patented hinge technology!

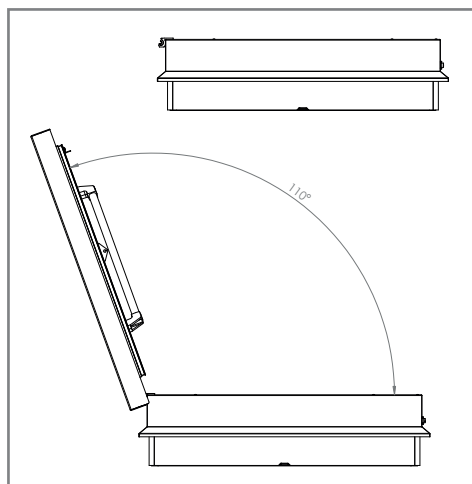


Figure 4. 110° opening angle

ACCORDING TO EN STANDARDS

- Air permeability (EN 12207)
- Wind resistance (EN 12210)
- Water tightness (EN 12208)

This product is protected under European Patent EP4251820. Any reproduction, imitation or unauthorised use is strictly prohibited.

CRH – A Roof Hatch That Fits Every Project

The **STAL-West** CRH roof hatch is more than just a functional building component – it's a precisely engineered solution that fits seamlessly into **industrial facilities, logistics hubs, and private homes alike.**

Its robust structure combined with refined design details brings together **reliability, safety, and aesthetics** – transforming a technical necessity into an architectural asset.

From custom colours to specialized locking systems and comprehensive engineering support, every project receives our **full attention and flexibility.**

Innovation from the future, available today – shaped by your vision.





STAL - West Zrt.

THE SYSTEM SUPPLIER



CUSTOMIZABLE LOCKING SYSTEMS

The standard version features a stainless steel cylinder lock, but options like panic locks or tailor-made security solutions are also available – because your lock should match your needs.



STANDARD SIZES AND WEIGHTS

TYPE	CLEAR OPENING SIZE (mm)	WEIGHT (kg)
CRH7090	700 × 900	38 kg
CRH900900	900 × 900	47 kg
CRH7001400	700 × 1400	54 kg
CRH10001500	1000 × 1500	79 kg



ENGINEERING SUPPORT FROM DESIGN TO IMPLEMENTATION

CAD/CAM systems, simulations, prototyping, and series production – we support your project from concept to completion.



TOMORROW'S FEATURES, AVAILABLE TODAY

Glass-covered versions are coming soon, allowing **maximum natural light** while maintaining superior thermal insulation.



REQUEST YOUR CUSTOMIZED QUOTE TODAY!



WE ARE LOOKING FOR A RESELLER TO DISTRIBUTE OUR INNOVATIVE PRODUCT!

GET IN TOUCH WITH US!

Do you have a question or need a custom solution?

Feel free to contact us. Our expert team will be happy to assist you!

STAL-West Zrt.

Private Limited Company, Hungary

Address: H-6041 Kerekegyháza, Dózsa Gy. road 1.

Contact name: Zoltán Hugyecz

Phone number: +36304141988

E-mail: hugyecz@stal-west.hu

Web: www.stal-west.hu

